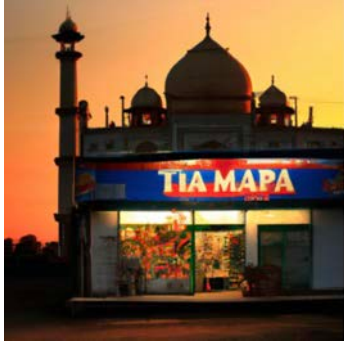


Read the article and answer the questions.

Dall-e is a new name, a new label, a new application, that quite soon, could be as famous as Google or Microsoft. So what is Dall-e? And what can it do? Dall-e is a new artificial intelligence program that creates images from verbal instructions. It creates pictures from words. And not only that, it can create amazing images. Dall-e is capable of generating high quality pictures of cats, dogs, birds, humans, and other common objects, as well as more abstract concepts such as "emotion" or "feeling". The program was named after the artist Salvador Dalí, who is famous for stunning, surrealist paintings. This just underlines the potential of this new AI application for enhancing creativity and its ambitious goal to change the way we use images. Nonetheless, in trying to understand Dall-e as an image creation application, it's important to look at both the potential benefits and downsides.



“convenience store taj mahal at sunset”

Dall-e can be a helpful tool for many different kinds of people. Artists and designers can use Dall-e to generate images of things that don't exist in the real world. Journalists and researchers can use Dall-e to create images of objects and situations that are difficult or impossible to photograph. People who are not fluent in English can use Dall-e to generate images from textual descriptions in multiple languages. Animators and video editors can use Dall-e to capture scenes of animals and people that are moving, as well as objects and things that are in motion. Scientists and engineers can use Dall-e to create pictures of things that are too small or too large to be seen with the naked eye. Explorers and adventurers can use Dall-e to visualize landscapes and geographical features located in remote or inaccessible locations. Psychologists and counselors could instruct Dall-e to create illustrations of people's memories.

Set against these amazing benefits, are some quite concerning downsides. Like social media feeds, Dall-e offers a constant stream of new content. So it may be addictive, and lead to compulsive use, which can in turn, affect judgment and decision-making. Additionally, Dall-e may increase anxiety and paranoia, and cause hallucinations and delusions, because it can create people and things that don't actually exist. And perhaps even worse, it can alter reality, by changing the way people and things look, so they are different to real life. Not only that, there are questions about infringing copyright, as Dall-e's AI algorithms are trained on millions of images that already exist on the internet. It could be argued, that it is copying images, and styles of art, created and owned by thousands of photographers and artists.



“ a great and powerful dog wizard casts spells during a thunderstorm”

To sum up, the potential benefits of Dall-e, which are almost infinite, seem to outweigh the downsides. With responsible use and proper regulations, Dall-e could be a helpful assistant for many people and society in general. It's possible that Dall-e will revolutionize the way we communicate, train, and create. For people with disabilities, Dall-e could provide a new way to communicate. For businesses and organizations, Dall-e could create more realistic simulations for training purposes. And for everyone, Dall-e could be used to inspire and develop new ideas and help with problem-solving. Dall-e could also help make art more accessible to everyone.

1. What is Dall-e?

2. What can Dall-e do?

3. Why do you think Dall-e was named after the artist Salvador Dalí?

4. In your opinion, what might be the most important benefit of using Dall-e?

5. What do you think are the main risks of using Dall-e?

6. How would you use Dall-e?

7. Write an instruction for a picture that you would like Dall-e to create (see examples below the pictures).

1. Dall-e is an artificial intelligence program that creates images from textual descriptions.
2. Dall-e can interpret textual descriptions of images and generate corresponding images. For example, it can turn a description like "a person riding a waves on a surfboard" into a corresponding image.
3. Salvador Dalí was a Spanish Surrealist artist who was known for his eccentric and dreamlike paintings. OpenAI likely named Dall-e after him because the program is able to create surreal images from textual descriptions.
4. Some benefits of using Dall-e include the ability to create images from textual descriptions, the ability to interpret complex concepts, and the ability to generate realistic images.
5. Some risks of using Dall-e include the potential for misuse, the potential for errors, and the potential for negative consequences if the images generated are not realistic enough.
6. I would use Dall-e to create images of products I want to buy. (Answers will vary.)
7. Answers will vary.